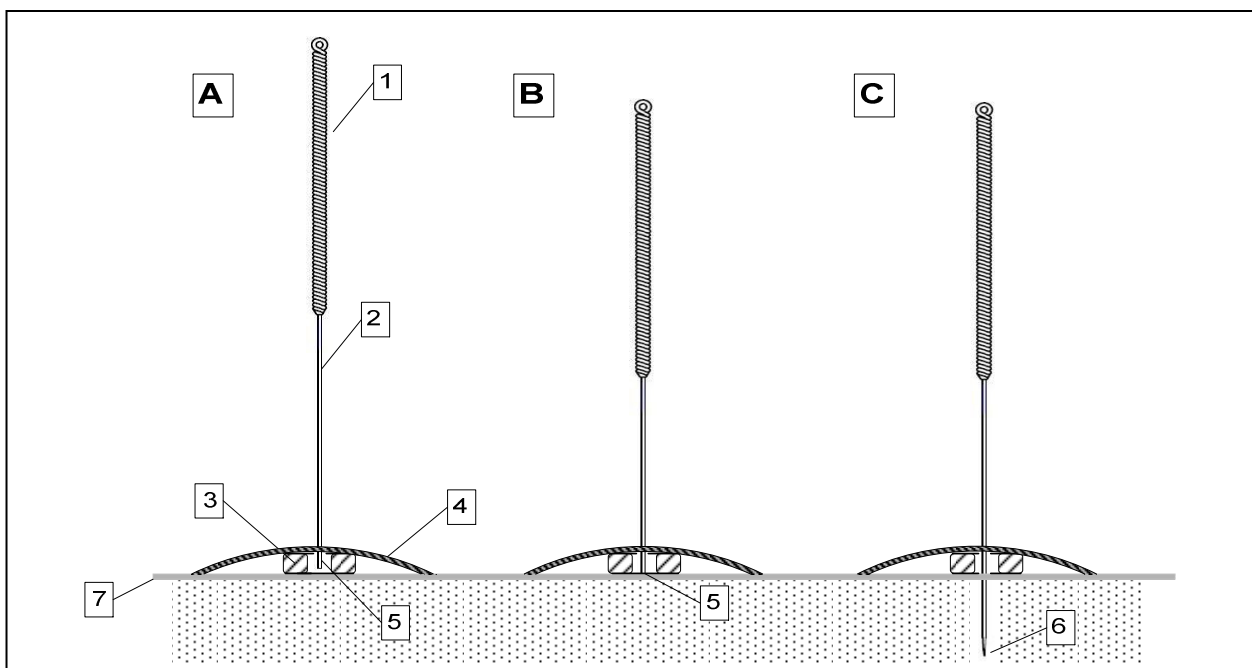


Application of the Streitberger Placebo–Needle:

- Placebo needle and verum needle has to be applied in the same manner:
 1. Locate and disinfect the acupoint
 2. Apply the ring at the acupoint (fig. 1)
 3. Cover and fix the ring with the plaster (fig. 2)
 4. Stick the needle through the plaster inside the ring (fig 3)
- The verum needle will penetrate the skin and has to be moved into deeper tissues until patients reaction will indicate DEQI [C].
- As soon as the placebo needle will touch the skin, the handle of the needle has to be pushed over the needle [A + B]/(fig. 4). After treatment time the placebo needle has to be removed quickly gripping it at the needle, not at the handle.



1 needle handle, 2 needle, 3 plastic ring, 4 plaster, 5 blunt tip of the needle, 6 sharp tip of the needle, 7 cutis

Diagram: Placebo-needle when touching the skin (left) and after retraction of the needle into the handle (middle), real acupuncture needle (right)

References:

- Streitberger K, Kleinhenz J. Introducing a placebo needle into acupuncture research. *Lancet* 352 (1998): 364-365.
- Kleinhenz J, Streitberger K, Windeler J, Güßbacher A, Mavridis G, Martin E. Randomised clinical trial comparing the effects of acupuncture and a newly designed placebo needle in rotator cuff tendinitis. *Pain* 83 (1999): 235-241.
- McManus CA, Schnyer RN, Kong J, Nguyen LT, Hyun Nam B, Goldman R, Stason WB, Kaptchuk TJ: Sham acupuncture devices - practical advice for researchers. *Acupuncture in Medicine* 2007;25(1-2):36-40.

Placebo Acupuncture



Fig 1



Fig 2

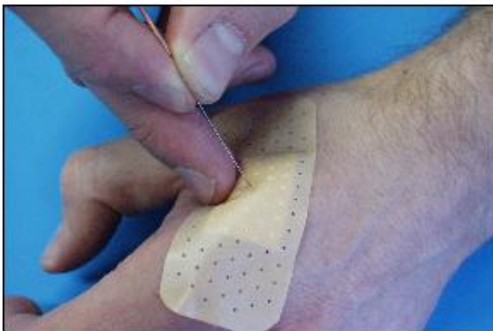


Fig 3



Fig 4